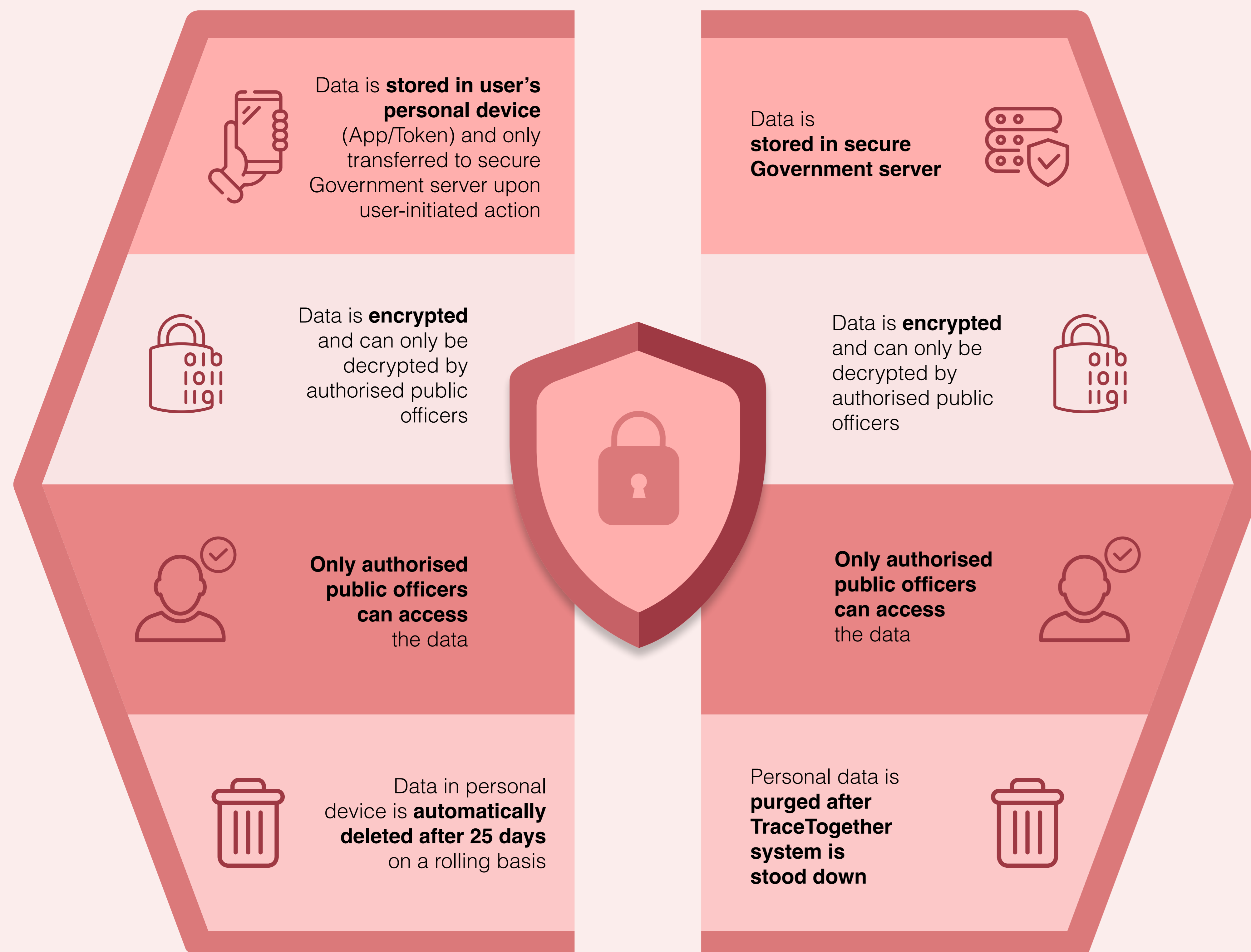




# Safeguarding **TraceTogether** (TT) Data

**Record of Bluetooth Exchanges**  
(information about who you have been in close proximity with)

**User's Personal Information**  
(user's contact details and personal identification)



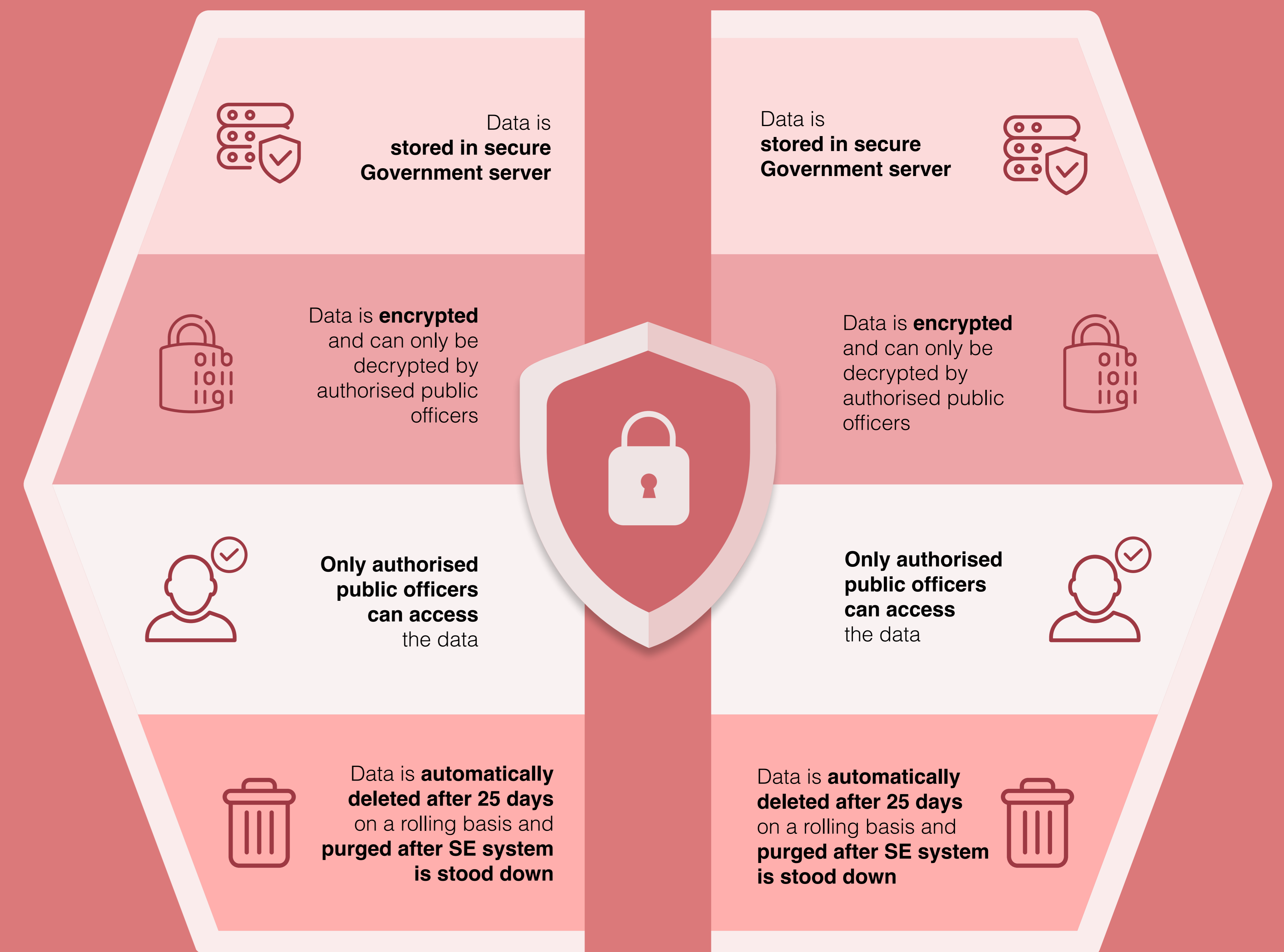
  
  
Both TraceTogether App and Token **do not collect GPS location or movement data**



TraceTogether personal contact tracing data is only for the purpose of contact tracing, except where there is a need to use the data for criminal investigation of serious offences.

# Safeguarding **SafeEntry** (SE) Data

**Record of SafeEntry Check-Ins/Outs**  
(information on the premises you have visited, and when)

**User's Personal Information**  
(user's contact details and personal identification)



  
  
SafeEntry collects user-provided information on location and **does not collect GPS location data**

SafeEntry personal contact tracing data is only for the purpose of contact tracing, except where there is a need to use the data for criminal investigation of serious offences.